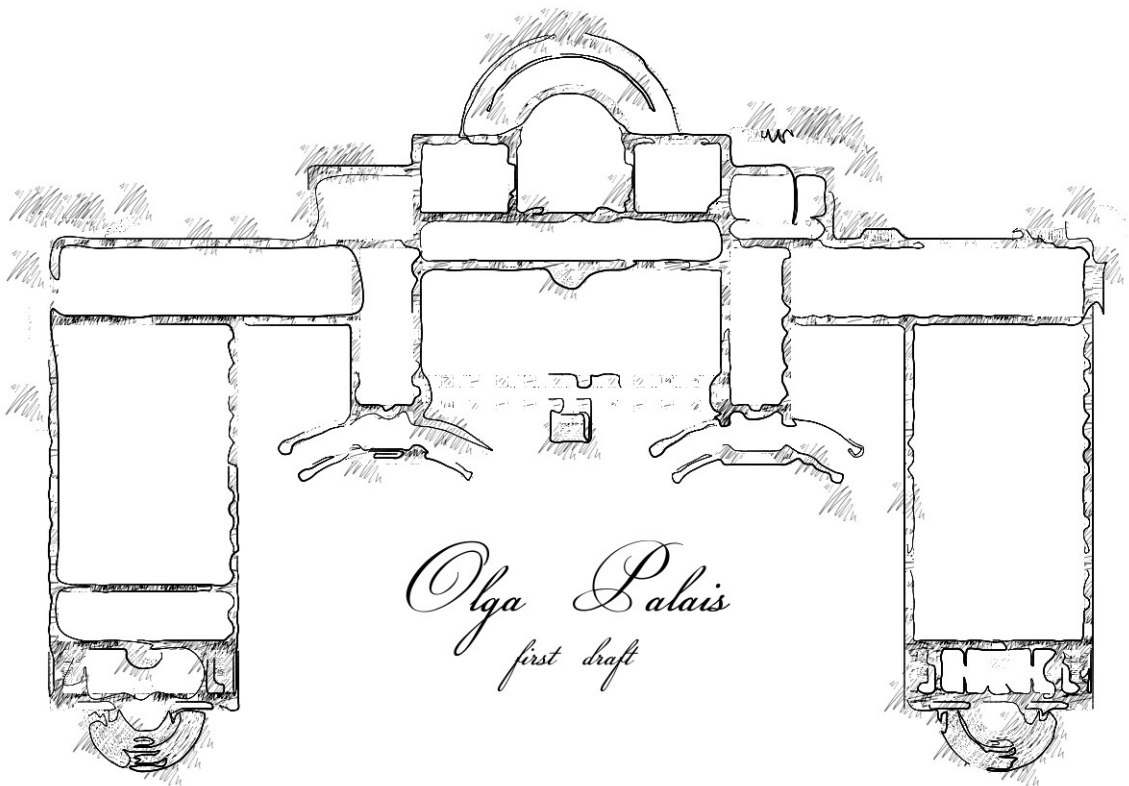
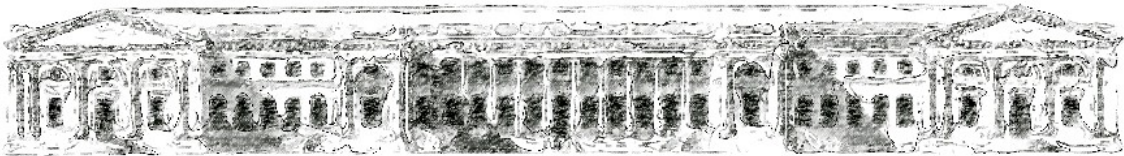




Provoke by difference!

Fin's Corp.



Olga Palais
first draft



„Olga Palais“

Main Wing (Standalone Version) 2.0

(Sub-Module 4, 4.1, 4.2, 4.3, 4.4, 4.5 & 4.6)

Dear buyers!

Congratulations on your purchase of this exquisite building from the production of Fin's Corporation, which is currently the most magnificent, palatial building commercially available in Second Life.

Fin's Corporation stands for products of exceptional quality, and we present with our residential buildings most luxurious living culture. We have set ourselves the goal to meet the satisfaction of our customers' highest requirements in terms of design and construction, and therefore we offer you with each module of the "Olga-Palais" a product that can withstand any comparison.

We placed during construction of this prestigious building, the highest value in the best possible precision in the texturing and detail, as it was in terms of memory consumption just acceptable. Three-dimensional textures, representing building structures are used by us only in places where they would find use in the real world. A considerable part of the textures used on the interior and exterior of the house was manufactured by us especially for this building, and is therefore only mounted here.

We can offer you, dear buyer, so to say with a clear conscience that you have acquired with the purchase of this extraordinary palace, not only a masterpiece of European architecture, but also own a building, causing with its uniqueness and beauty the kindness and amazement of your visitors - without a doubt.

Therefore we are very confident that you will be satisfied with this palace in all respects.

Sincerely!

Findbhair

H.I.H. Findbhair McConaught
Grand Princess of The Most Honourable Order of Art and Morality,
Owner of Fin's Corporation

The building - architectural style and interior design

Over its entire construction the Olga-Palais follows the Russian architecture of the late 18th Century. This is well known for its great richness and generous spatial design, and is characterized (contrary to all classicistic influences of Europe) by its typical decor and eastern coolness and distance mediating material choice in the interior. Even today, Russian palaces are among the most magnificent buildings of our time and they still bear witness to the power and wealth of its former builder.

Floor plan and exterior facade of the Olga-Palais are based mostly on the model of the Alexander Palace in Tsarskoye Selo (now Pushkin), a suburb of St. Petersburg. The neoclassical Alexander Palace was built by Catherine the Great for her favorite grandson, the future Czar Alexander I, on the occasion of his marriage with Louise of Baden in 1793, adjacent to the Catherine Palace, and was also the favorite residence of the last Russian Tsar Nicholas II and his family.

In the interior of the Olga-Palais, we also follow the Russian palace architecture of this era, but leave the model of the Alexander Palace in favor of a coherent collection of various state rooms of different origins, coupled with our own additions and modifications. In this way, dear buyers, we can provide you, on the one hand a functional building and on the other a prestigious residence.

The construction of such a large building is a time-and labor-consuming business, so we decided to divide the house into several modules. These additional modules we will progressively offer for sale after their completion. In this way it was possible for us to offer a fully functional building of small dimensions for our customers today. And to you, it is possible to purchase just as much Olga Palais, as you plan to use on your demands, needs and possibilities.



[H.I.H. Gr. Princess Olga Nikolaevna Romanova](#)

Main Wing (Standalone Version)

NOTE: This special version of the main wing of the Olga Palais is NOT expandable!

This is the standalone version of the main wing of the Olga Palais.

This version has been created to meet the prospective customers among our buyers who are not able to build the entire palace. The house is sized this way that it can be built, for example, on one of the popular homestead sims.

The construction of the house meets the usual standards of our buildings in quality and detail. Differences to the modular version of the main wing consist only in very small parts, such as the parquet in the library. The floor plan of the main wing standalone also corresponds closely to the floor plan of the Alexander Palace, which served as a model for the whole palace.

When you enter the house through the main entrance, you will be received by the vestibule, with its impressive murals. Shown here is a small part of the famous "Gallery of the History of Ancient Painting" of the St. Petersburg Hermitage. And we are very proud to show you this little detail of this stunning gallery.

Right hand side follows the vestibule a small reception room that we call "Cavaliers in attendance room". The wall stucco in the kind of large flower vases on wrought iron stands, comes from a historic room décor of a bourgeois private residence of the last century from Geisenheim, Germany. It is one of the few wall textures for the Olga Palais, manufactured by us, which does not originate in Russia. But it was integrated in the house because of its beauty.

Left hand of the Vestibules follows a small library whose design represents a simplified form of the original library of the last Tsar Nicholas II in the Hermitage.

If we leave the library, we enter the staircase to the upper floor with its small side exit. The staircase corresponds in shape and design to the stairs of Module 3 of the palace, constructed entirely in wood carving and marquetry technique. However, we have opened the walls to the corridors for this version of the house and replaced by rows of columns. In this way, the now visible corridors gives the room more light and freedom. And we are sure you will love this transformation of the staircase, and say even more rightly, that this is probably one of the most beautiful staircases that you can find in SL. One of our specially designed optional chandelier completes the package for this staircase.

The upper floor is characterized by 3 smaller private parade rooms in also breathtaking design. In detail these are the "Chinese parade room", the "Winter parade room" designed as a salon, and the "Blue drawing parade room".

The wall coverings of the "Chinese parade room" are hand painted silk fabrics with images of plants and animals in an environment of luxuriant floral gold stucco. Noteworthy is the ceiling painting "Falling or Flying, .. Heaven Knows", the angel falls down or seems to fly upwards, depending on the perspective of the observer - a clear allusion to the consideration of preconceived notions.

The winter room shows us in its rather plain design large murals winter sceneries of the snowy Russian land together with a composition of various attractions of the old Russian capital St. Petersburg. Also notable in this room is the elaborate parquet with large snowflake-like rosettes, and the ceiling decoration in the form of the Russian imperial coat of arms animal (the double-

headed eagle) manufactured of sheet gold as we could admire it already in the throne room of the module 1 of the modular version of the Palais.

The design of the "Blue drawing parade room" corresponds almost an faithful copying of one of the most beautiful rooms of the Catherine Palace in Tsarskoye Selo. Only the floral pattern of the wall covering is slightly different to the original, because this was not to be found in sufficient quality.

If we pass the blue parade room, so we go straight to the gallery of the palace church, which completes the building on the east side.

This church in the Russian Orthodox style is the reason for the unusually long construction period of this module from slightly more than 6 months. Especially the production of each icon and mosaic panel of the upper window row was very time consuming.

Project and design are completely our own design, although also the church can be found at this location in the example Alexander Palace. A large part of the processed mosaic images taken from the St. Isaac's Cathedral in St. Petersburg, together with some mosaic icons of the Church of the Resurrection.

The entire back of the house is formed by the three united parade halls.

These three main rooms of the house are reproduced to nearly 100%, according to example of the restored rooms of the original Alexander Palace. Only the golden ceiling is not the present situation. However, the ceiling of this three rooms have been refurbished in history very often. In detail the three rooms are known as "portrait hall", "semi-circular hall" and "marble or billiard hall", and had a sense something like the Imperial Lounge.

The walls of all three halls are completely covered with precious Pighon marble, that is in original high glossy. The pillars and door frames are made of yellow onyx (resin). The lofty windows with their characteristic columns subdivision are a typical stylistic element of Russian architecture. They can be found reproduced in many places in St. Petersburg.

The ceiling painting of the "Semi-circular hall" shows the triumph of the history over death. A clear reference to the circumstance, which we have to thank, that we can remember all the inhabitants of the Russian original palaces still. (This picture is not of Russian origin, and no part of the original palace.)

We provide you all the essential design elements of this three halls as optional packages in this offer. Specifically these are for the semi-circular hall the dominating decorative vase with its characteristic jewelry from gold flowers, all available paintings of all three rooms, and the large mirrored door of the Marble hall (but without the door function).

From the eponymous semi-circular porch of the semi-circular hall we step out from the garden entrance with its two distinctive semi-circular ramps, and our virtual tour is now completed.

Please see as a small addition the hidden room in the dome of the roof.

Specifications

The building covers with its external dimensions 60 meters in length, 41 meters in width and 20.25 meters high, an area of 2460 sqm.

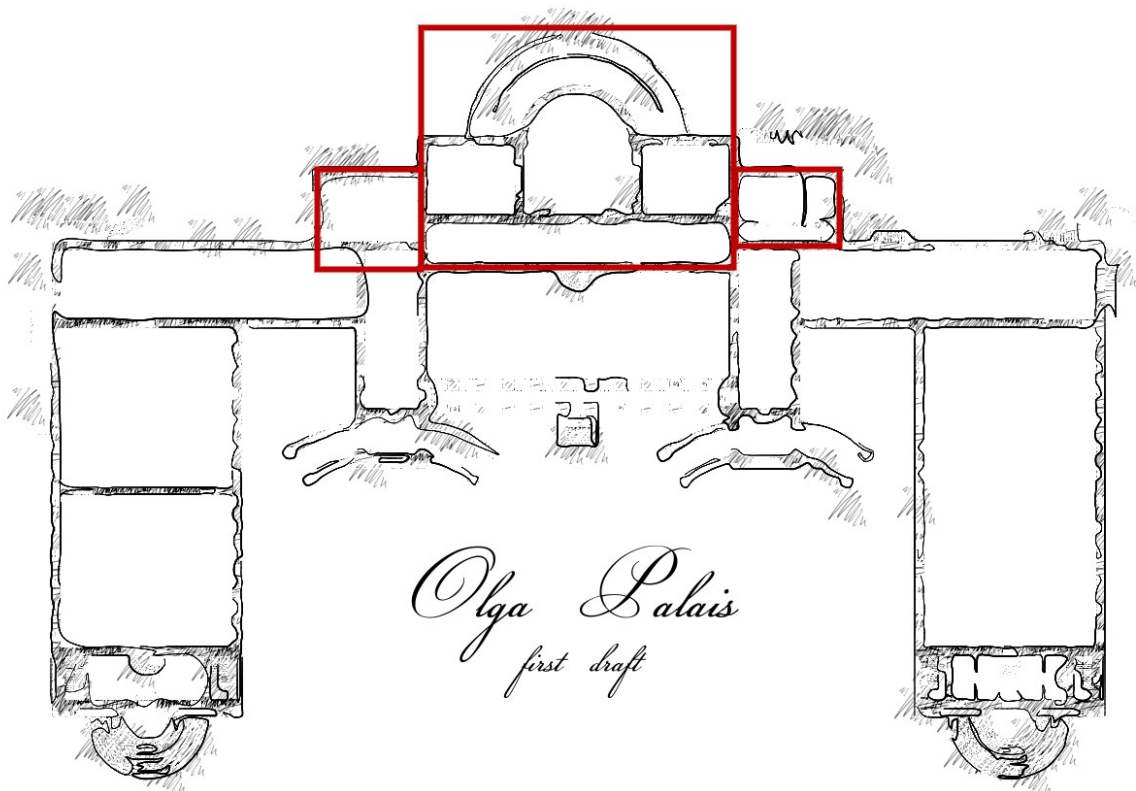
The land-impact varies between 698 primitives (minimum) and 1069 primitives (maximum) including the bundled sub-modules 4.1, 4.2, 4.3, 4.4, 4.5 & 4.6.

It is therefore still possible to build this chateau on a 1/8 sim; although we do not want to recommend this. Because neither for the exterior design, nor for the necessary interior would remain a sufficient primcount.

Rather, we recommend a homestead sim, as these have enough space for a representative garden.

The complete working of scripts on the relevant plot is indispensable for the setup of all sub-modules (for the period of installation)!

If necessary, ask the landowner for support.



Main Wing SA - Delivery and Installation

(incl. Sub-Module 4.1 - 4.6)

The module is delivered in a transport box, shown in Fig.1 in the background. It consists of six sub-modules with the item numbers 4.0, 4.1, 4.2, 4.3, 4.4, 4.5 and 4.6 which can be seen in the foreground of Fig.1.

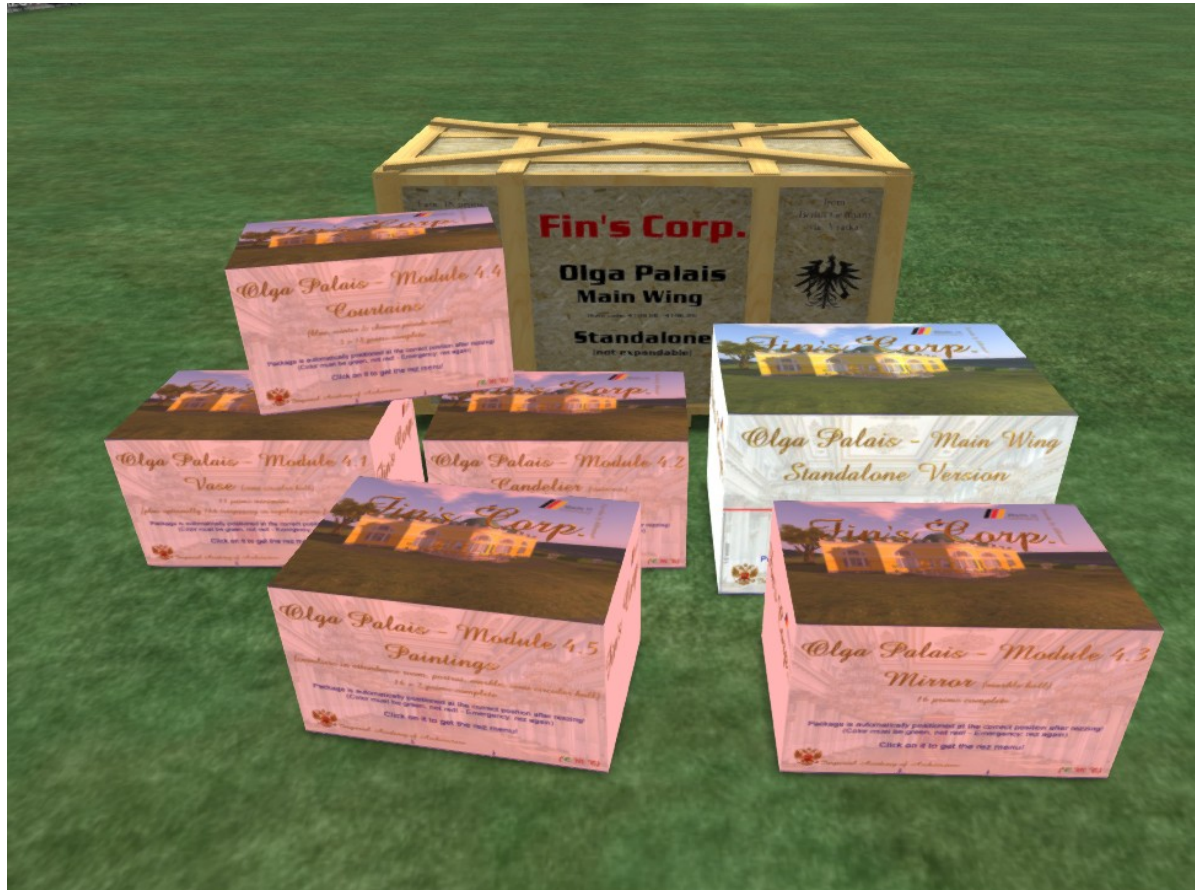


Figure 1: Scope of delivery

Sub-module 4.0 is the complete building. The also delivered five sub-modules 4.1 - 4.6 are the add-on modules for the decorative vase in the semi circular hall, the chandelier in the staircase, the mirrored door in the marble hall (whitout the door function), all curtains for the rooms upstairs, the paintings for the portrait hall, marble hall, semi circular hall and the cavaliers in attendance room and some additional stuff as gift from Fin's Corp. to your new home.

The setup is easy, and you will be supported in the best way to avoid classical building mistakes, through the sophisticated script technology of our company. For this purpose it is necessary to comply with the following assembly instructions step by step.

Before we are starting, we would ask you urgently:

Make a copy of the delivery box!

Well, after you have made this copy, we can start now!

Unpacking delivery box & set up Sub-Module 4.0

- 1.) Rez the just copied delivery box on your property. Simply drag it by "drag and drop" from your inventory folder onto the ground of your property in front of you.

(If you have trouble, check your rez-rights, and maybe the activated group.)

- 2.) Click with the left mouse button on the delivery box, and transfer its contents from the window that opens with the help of the available buttons in your inventory.

You will receive a new inventory folder with the name:

"[BOX] Fins Olga Palais Main Wing SA (copy mod)SALE"

This folder contains the six sub-modules:

- ✓ [PACKAGE] Fins - Olga Palais - Main Wing standalone 2.0 (mesh)
- ✓ [PACKAGE] Fins - Olga Palais - Module 4.1 v.2.0 (vase)
- ✓ [PACKAGE] Fins - Olga Palais - Module 4.2 v.2.0 (candelier)
- ✓ [PACKAGE] Fins - Olga Palais - Module 4.3 v.2.0 (mirror)
- ✓ [PACKAGE] Fins - Olga Palais - Module 4.4 v.2.0 (courtains)
- ✓ [PACKAGE] Fins - Olga Palais - Module 4.5 v.2.0 (paintings)
- ✓ [PACKAGE] Fins - Olga Palais - Module 4.6 v.2.0 (furniture)

along with some landmarks and notecards with the short version of this manual.

- 3.) Now delete the delivery box on your property before we proceed.

- 4.) Now go to the planned location of the building and rez the sub-module 4.0 ([PACKAGE] Fins - Olga Palais - Main Wing standalone 2.0 (mesh)) from the newly received inventory folder (see Fig. 2).



Figure 2: Sub-module 4.0

It appears the white module box that is shown in figure 2, and at the same time a menu will open in your viewer. Furthermore, you will immediately notice the picture on the top of the box. These indicate the orientation of the building, and this will help to determine the suitable location of the module box. At the same time, the red line on the box shows the height of the floor of the building. It is exactly one meter above the bottom edge of the base of the house, agreeing with the lower edge of the box.

Note: For the further installation of the furniture it is of great advantage to build this building totally horizontal. Of course you can turn the building in any desired horizontally direction.

- 5.) Select the desired location by moving the box. At this time it is not recommended to raise or lower the box in the vertical direction.
- 6.) If you have found the desired location, select the menu item "Rez" and wait until the building has been completely constructed. This process should be completed within a few seconds. Difficulties can occur only if the proposed location is too close to the property line. In this case it is advisable to set up the building at a greater distance to the border, and to move in a second step (see next item).
- 7.) The finished building is constructed entirely from foundation to roof and all parts are functioning (Fig. 3). The house can be corrected in its spatial position by rotating or moving the box located in front of the garden entrance. The building will follow any change in the position of the box automatically.



Figure 3: Olga Palais Main Wing (standalone version) - exterior

- 8.) If the final place for the building has been found and everything is to your satisfaction, select in the open menu the item "Save". This fixes all components in their final position. (Should the menu not be open, click on the box.)
- 9.) As a final point, please remove the box in front of the garden entrance of the building. The construction of sub-module 4.0 is now complete. The building can now be used. If you also plan to install the five additional modules 4.1 - 4.5, so please follow the steps in the following section.

Sub-Module 4.1 - 4.6 – set up

- 1.) The complete working of scripts on the relevant plot is indispensable for the setup of all sub-modules (for the period of installation)! If necessary, ask the landowner for support.
- 2.) If point 1 is guaranteed, rez the box of the desired sub-module at any location inside the newly constructed module 4.0 (Main Wing SA) or in a radius of max 96 meters measured from the center of the semi circular hall. The box has a reddish hue (Fig. 4). At the same time, a menu appears on your monitor screen.



Figure 4: expansions sub-module box – not positioned

- 3.) For the correct set up the sub-module box moves automatically to the necessary location with assistance of the automated module positioning system developed by Fin's Corp. And after its successful orientation in space, the color will change from reddish to greenish (Fig. 5).

If this should not work: Delete the box and try a second or third time. A large delay (lag) in Second Life can complicate this process. If the automatical positioning still does not work, and during the rezing there was **no menu**, so please check whether the execution of scripts is allowed on your property, whether you have selected the right group, and set briefly these necessary rights, or ask the landlord to do this for you.

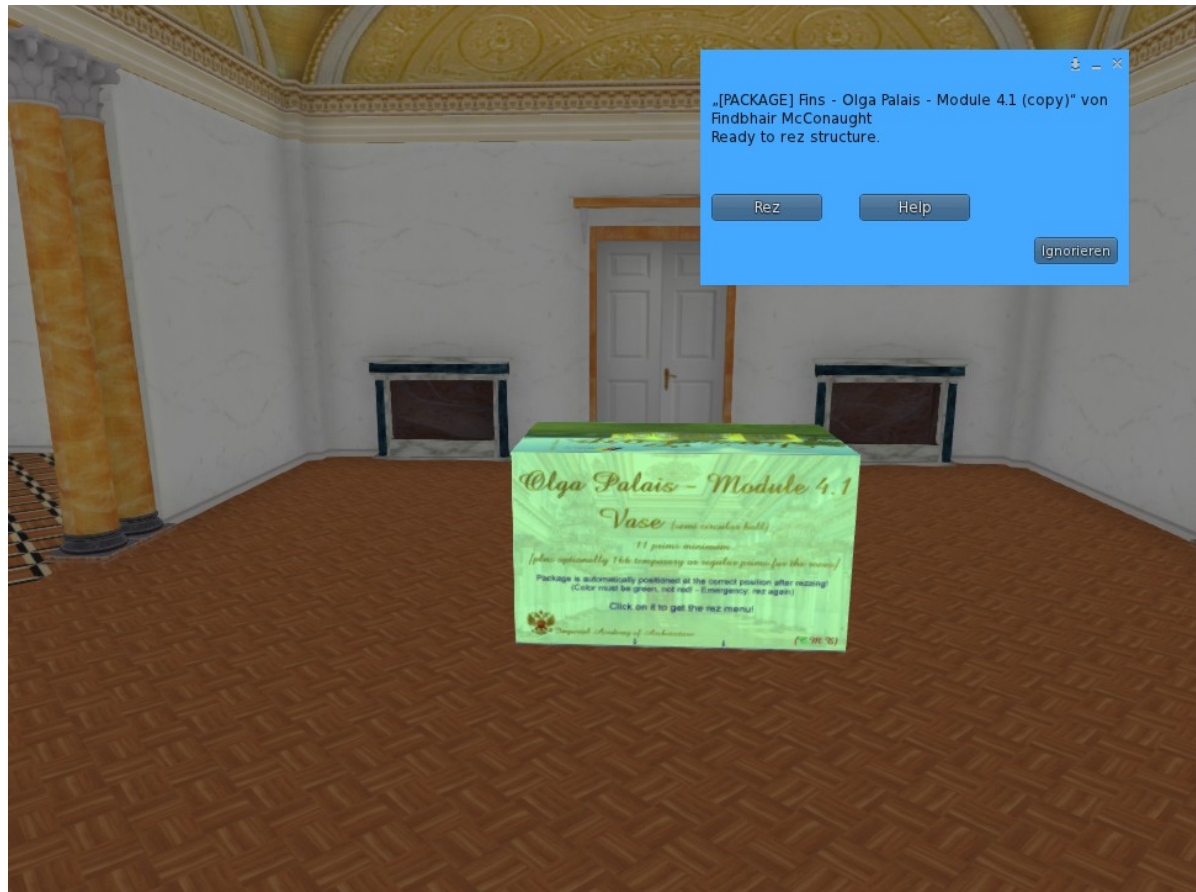


Figure 5: expansions sub-module box - after automatical positioning

- 4.) Now select in the open menu the item "Rez" and wait until the expansion module has been fully rezzed. (Should not be open the menu, click on the box.)
- 5.) Now select in the open menu the item "Save". This fixes the component in place. (Should not be open the menu, click on the box.)
- 6.) Now remove the box, and the construction of the extension module is finished.

Proceed with additional modules in the same way.



Operating instructions of the individual components

Funnels

Click on the decoration of the funnels for activation or deactivation smoke.

Vase in semi circular hall

The vase in the semicircular hall is an original decorative element from the semi circular hall of the Alexander Palace. It rezz the golden flowers per menu permanently or temporarily as desired. To get the rez menu, click on the golden part of the base (only the owner can use this menu).

Candelier in the staircase

For switching on and off of the light, click on the lamp (everyone can switch!).

There are four settings:

- 1.) on (permanent with full brightness)
- 2.) dim (permanently at half brightness)
- 3.) automatic (full automatic control depending on the time of day (4 hours SL-day))
- 4.) off (all off)

Door / Window Control

There are 3 "levels" of access to these doors: Owner, Enforcer, and Authorized.

To change the settings, touch the door and say the command in the open chat:

Owner Commands:

- "show help" - shows the help
- "Reset Door" - clears ALL of the access lists, resets script
- "add enforcer [name]" - replace [name] with the name of the new enforcer (note: CASE COUNTS)
- "remove enforcer [name]" - replace [name] with the name of the enforcer to remove (note: CASE COUNTS)
- "say list" - Shows the current lists
- "lock" - locks doors to all not on one of the three lists
- "unlock" - opens the door to be used by public
- "change time <nn>" - replace <nn> with the number of seconds you wish the door to remain open if not closed by user
- "add [name]" - replace [name] with the name of the new person Authorized (note: CASE COUNTS)
- "remove enforcer [name]" - replace [name] with the Authorized person's name to remove (note: CASE COUNTS)

Enforcer Commands:

- 'show help' - Displays the help
- 'lock' - Sets the door to Locked mode
- 'unlock' - Sets the door to Unlocked mode
- 'add [name]' - Replace [name] with the av you want to add to the list
- 'remove [name]' - Replace [name] with an av you want to delete
- 'say list' - Shows who is on the All Access list
- 'change time [time]' - Replace [time] with the number of seconds you want the door to stay open and listen."

Update the building

We use an automatically update system; rez the delivery box, to get an update of this building. The box will automatically check whether an update is available, and triggers the delivery of our update server.

Views of the Olga Palais – Main Wing (standalone version)



Figure 6: bird's-eye view (garden decor not included)



Figure 7: The Gallery of the History of Ancient Painting, the royal way to welcome guests (furniture not included)



Figure 8: You can also wait more uncomfortable (furniture, carpet, lamp not included)



Figure 9: Maybe, the bedroom of a queen? (carpet not included)



Figure 10: Each room has a unique design, each wall has its own custom texture.



Figure 11: gold and silk



Figure 12: an original imperial living room (banks and lamps not included)



Figure 13: The art of woodworking, millennia-old tradition of mankind



Figure 14: 200 parts forms this stunning staircase, one of the prettiest in SL



Figure 15: a smal study (lamp and furniture not includet)

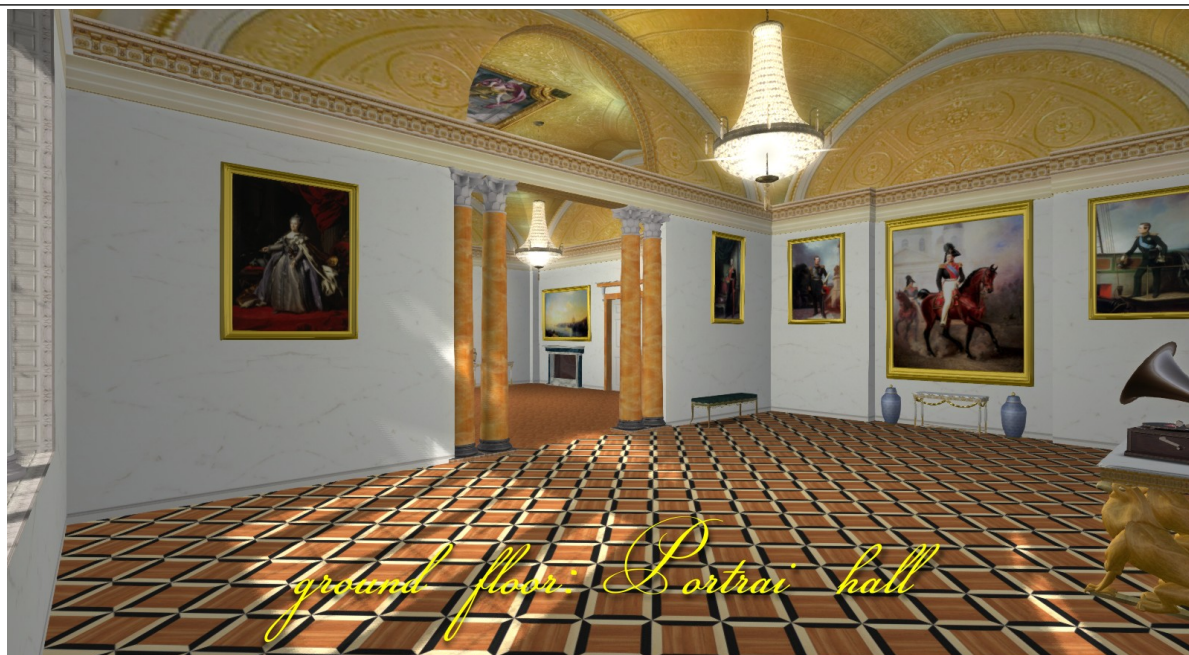


Figure 16: Portrait hall with original paintings from the Alexander Palace
(lamps, bank and gramophone not included)



Figure 17: The gallery of the main church of the Olga Palais



Figure 18: The main church of the Olga Palais



Figure 19: main front with church portal and right side of the building (garden decor not included)



Figure 20: left side of the house with staff entrance (garden decor not included)



Figure 18: Floor plan and layout of the rooms (decor not included)

Thanks and look forward to the future

We wish you much joy with your purchased building, and we hope to welcome you in the future as our customer.

Special thanks

Mr. Kaya Angel

Mrs. Lulu Oller

for perpetual and free access to the building site resources

Mr. Maximilian Nikolaides

for good criticism and scientific advice (architecture)

The Rose Family

for the moral support

With many thanks!

Berlin on the 21st September 2016

Findbhair McConaught