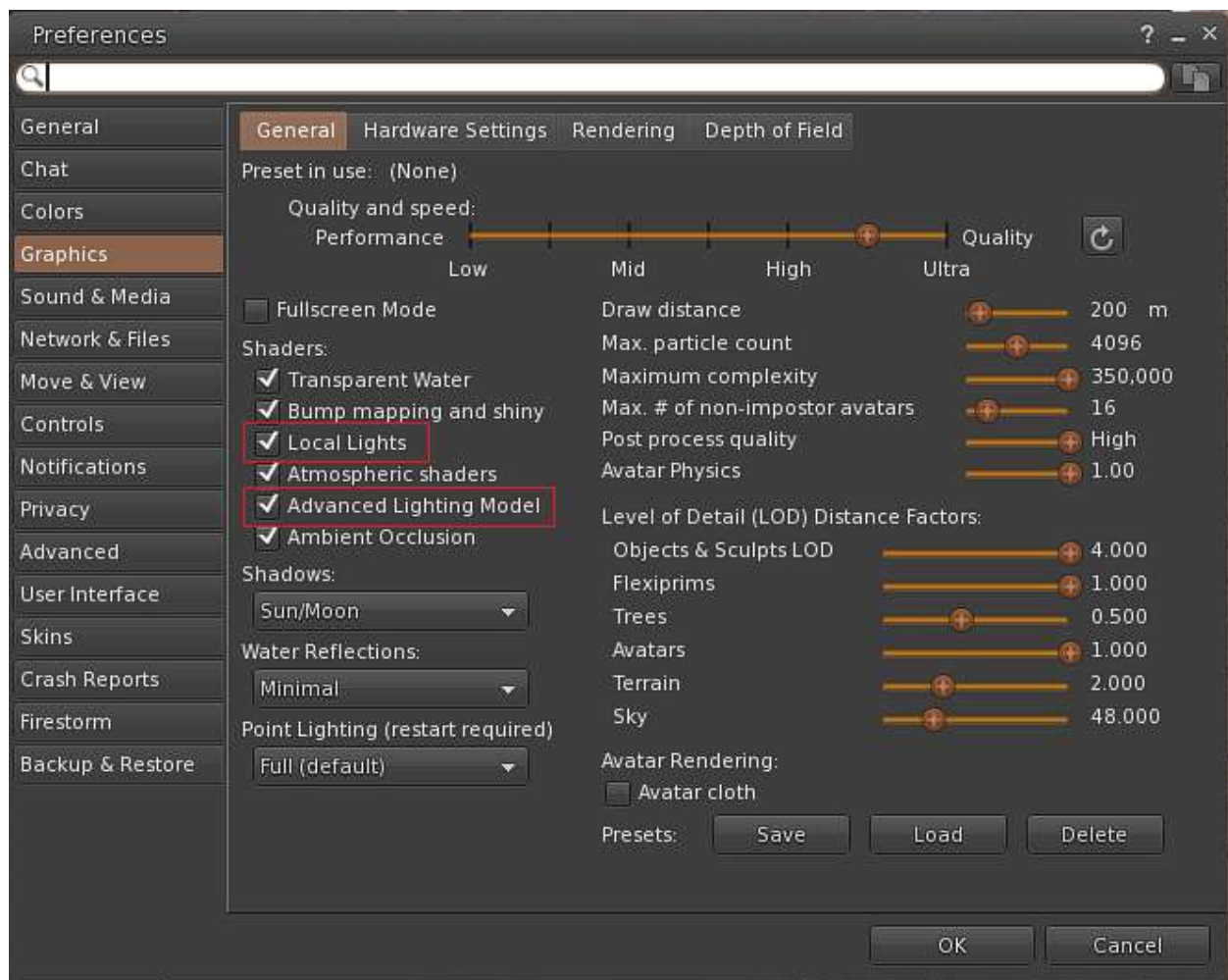


# Banana 45

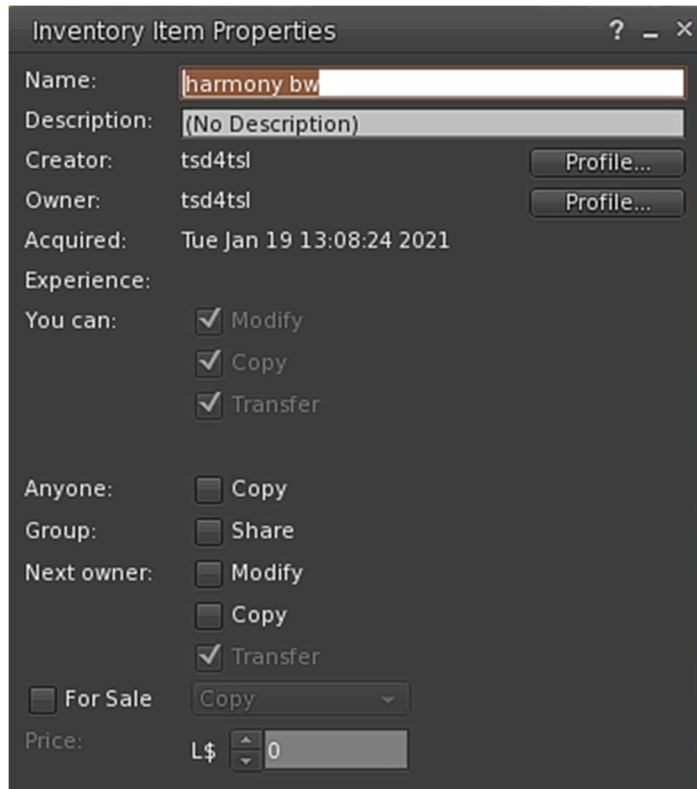
## MAGIC PHOTO FRAME (MATRIX) INSTRUCTIONS

1. Two options from Graphic Settings must be enabled to be able to properly use this photo frame:

- Local Lights
- Advanced Lighting Model



2. Choose some photos from your inventory. The photos must be yours or you should have transfer rights.



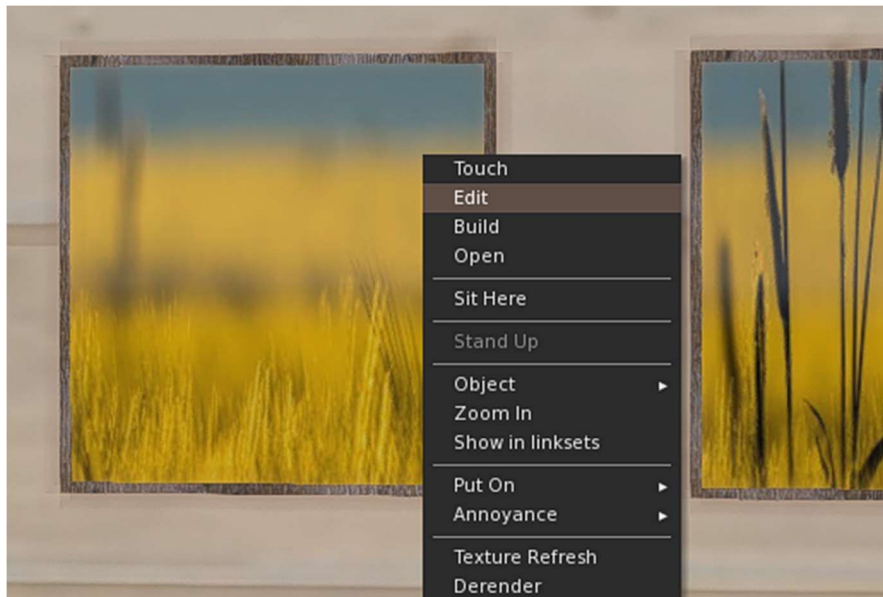
And as the photo frame has a square shape, the photos look better if they are square. The photo file name length must be less than 21 characters in order to be listed in the texture selection dialog.



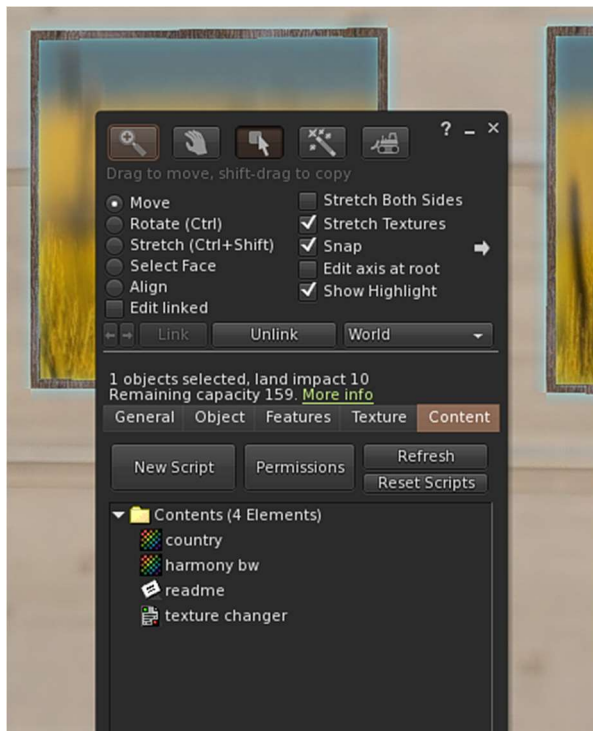
***harmony bw***



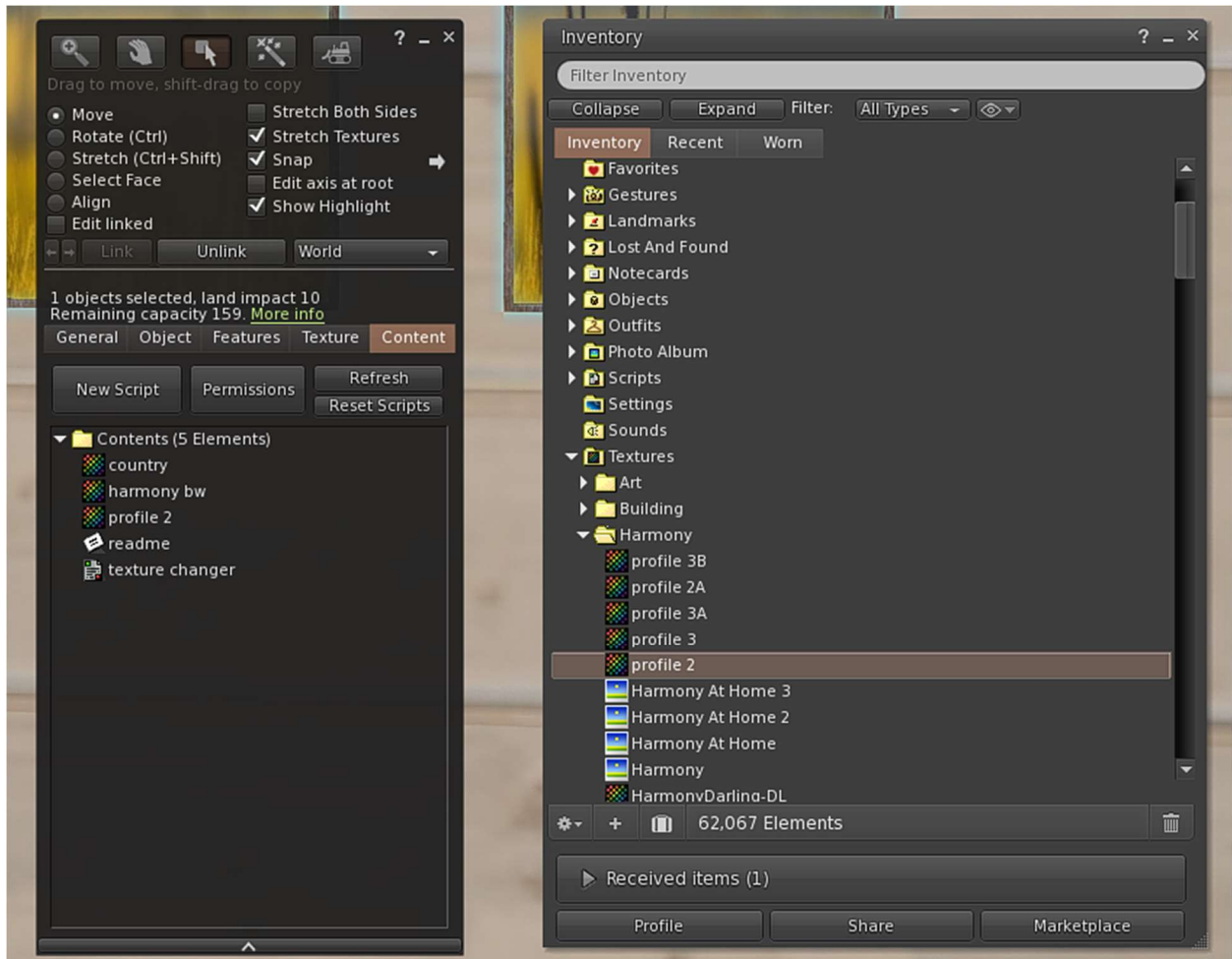
3. Set the Magic Photo Frame to edit mode by right clicking on the item and then choosing "Edit" from the menu.



4. In the edit window click on Content tab.



5. While the Magic Photo Frame is in edit mode, drag the selected photos from the inventory to the Content folder inside the Content tab in the Edit Window.



6. Close the edit window.

7. Click on the frame to choose the copied photos.

