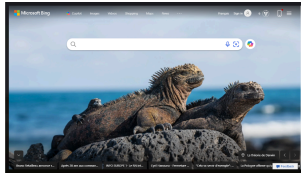


Wall Mounted TV

Version 1 14-02-2025

1 - What's in the box ?

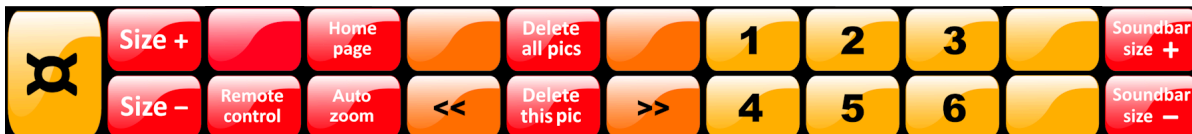
- a flat screen TV to rez on a wall
- a HUD remote control to wear



2 - How to use the HUD



Click the **left loudspeaker** on the HUD to **ENTER** the parameter settings



- Use the **Size -** and **Size +** buttons on the left to resize the TV screen
- Use the **Soundbar size -** and **Soundbar size +** buttons on the right to resize the HUD as you wish
- Click on the **Remote control** button to change the remote control range: 10m or 20m
- Use the **Auto zoom** button to immediately zoom in on the TV screen when you touch the screen (on/off)
- Display your favourite web page on the screen, then click the **Home page** button to change the URL of this button in the floating bar above the screen
- Click on the **large yellow** button to **EXIT** the parameter settings

3 - Using the TV



Click the **TV** button on the HUD to switch the TV ON

You can also use the **Google** and **Youtube** buttons directly

You can type your search straightly on the screen in the website search bar and press **ENTER**

4 - Using the floating bar above the screen



You can use the floating bar above the screen to paste a URL and press **ENTER**

Use the **2 arrows** to navigate

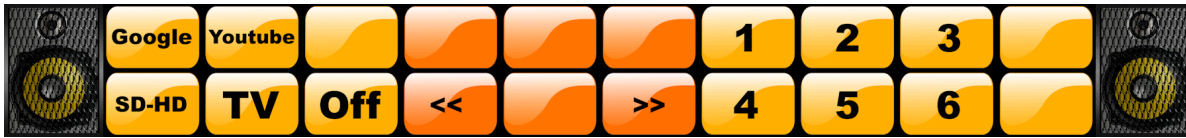
Use the **HOME** button to display **Bing.com**

Use the **zoom** button

Wall Mounted TV

Version 1 14-02-2025

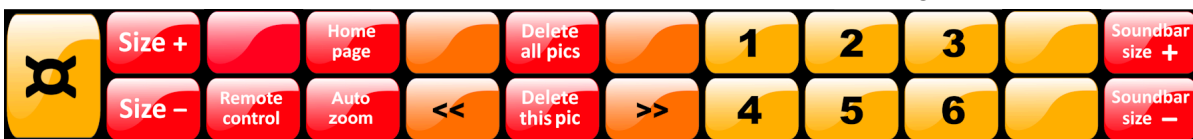
5 - Using the Radio



Click the **1 2 3 4 5 6** buttons on the HUD to listen to the preset radio stations

6 - How to change one of the 6 radio presets

Click the **left loudspeaker** on the HUD to **ENTER** the parameter settings



Choose and click one of the 6 buttons **1 2 3 4 5 6**

Type or paste the radio url into the blue pop-up window, then click on the **Submit** button

You can also add a blank space followed by a **Name** to the end of the URL and press **ENTER**

Example: <https://icy-6.radioparadise.com/mp3-192> **Blues**

Click on the **large yellow** button to **EXIT** the parameter settings

7 - How to load and display pics, textures, photos in the TV screen

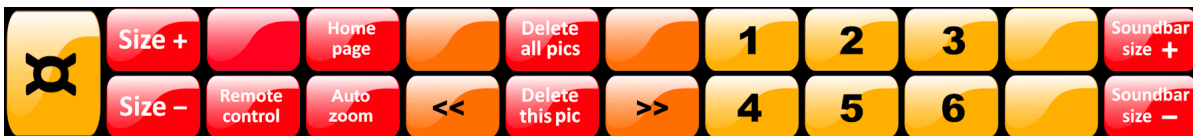
Hold **CTRL** and **drag & drop** the pics from your inventory onto the TV screen



Use the **<< >>** buttons in the HUD to display the pics

8 - How to delete pics in the TV screen

Click the **left loudspeaker** on the HUD to **ENTER** the parameter settings



Use the **<< >>** buttons to choose the pics to delete and click **Delete this pic**

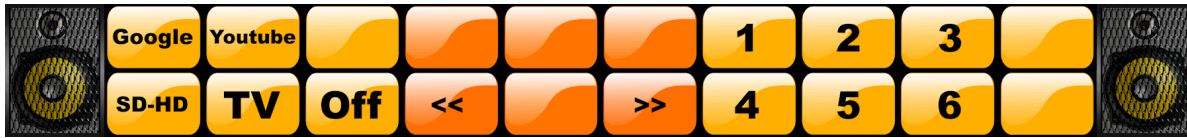
You can also use the **Delete all pics** button if you want to **delete all the pics** in the TV screen

Click on the **large yellow** button to **EXIT** the parameter settings

Wall Mounted TV

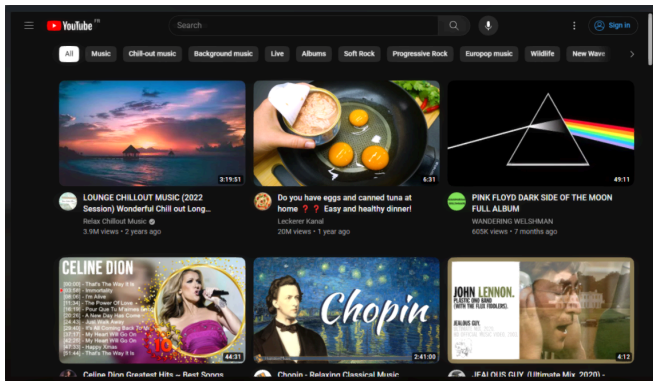
Version 1 14-02-2025

9 - Miscellaneous

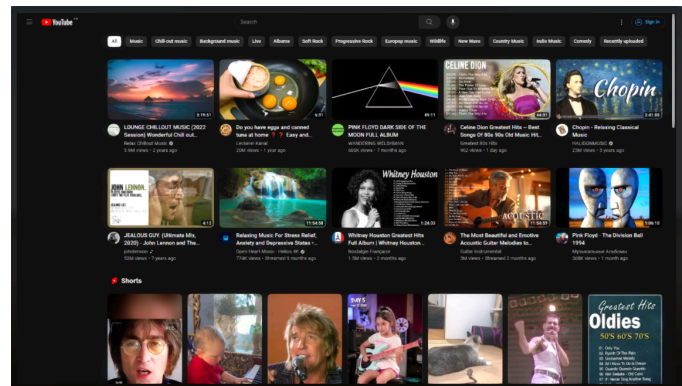


Use the **Off** button to shut down the TV screen

Click the **SD-HD** button to change the display density: **SD / HD**

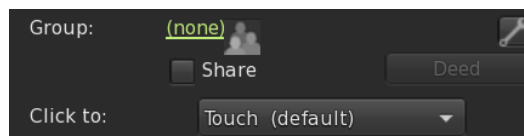


SD example



HD example

Choose a **GROUP** to allow access to avatars wearing the same **GROUP**



Wall Mounted TV

Version 1 14-02-2025

10 - Version history

Version 1 14-02-2025

- TV screen: SD or HD
- resizable TV screen
- 6 radio presets
- manual slideshow
- remote control HUD fully usable to control the entire TV screen from your screen
- 100% mesh
- 1 prim